

ULTRA

MARINE PRODUCTS



ANCHORS

SWIVELS

CHAIN GRABS

ULTRALINE



WWW.ULTRAMARINEPRODUCTS.COM.AU

ULTRA

ANCHORS

Overview

Manufactured in Europe, the Ultra Anchor range is the pinnacle in anchoring technology and design. Completely hand made from 316 stainless steel and hand polished. Every Ultra Anchor is designed for excellence.

The Ultra Anchor demonstrates why a correct weight distribution and design is so important when setting and recovering your anchor. In fact, invert any Ultra Anchor and it will instantly recover itself to the attack position.

Such performance has been achieved with the innovative patented features this anchor displays including a curved lead filled tip for instant penetration, a hollow shank for optimal weight distribution, concaved base surfaces for maximum holding power and large side wing plates to avoid release during changing wind or tide conditions. Furthermore, each anchor is easily recoverable with the flat pivot surface on the underside base.

The Ultra Anchor is suitable for all vessel types and locates securely onto the bow roller. Standard anchor sizes range from 5kg to 200kg with larger anchors available upon request.

Sourcing Europe's finest materials and fabricated by specialist engineers, the Ultra Anchor is supplied with a **LIFETIME WARRANTY** against manufacturing defects under normal conditions and use.



The Ultra Anchor suits most bow rollers and is suitable for all vessel types.

Unique Features

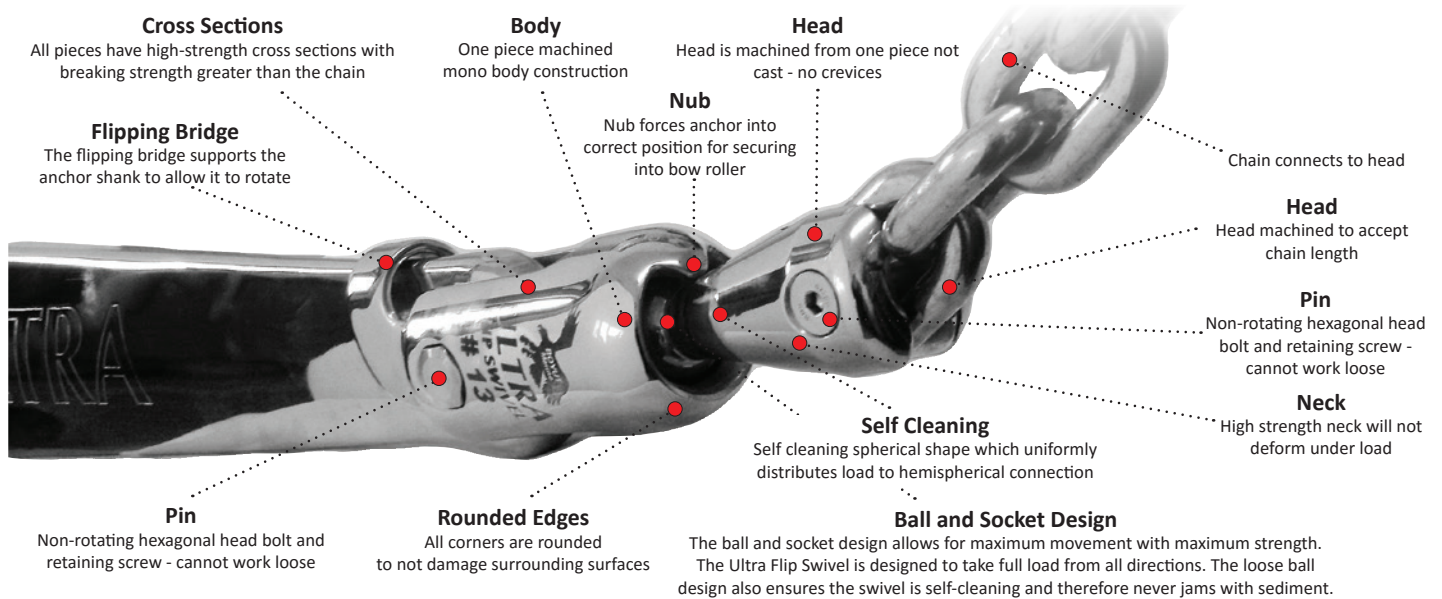
- **Reinforced Hollow Shank** – Enables weight to be concentrated on anchor tip.
- **Tubular Construction** – Anchor cannot lie on its spine but recovers instantly to the attack position. Anchor will also load correctly into the bow roller.
- **Lead Filled Tip** – Lead is inserted into the anchor tip, achieving the optimal weight distribution and ensuring the anchor will penetrate unfavourable bottom conditions.
- **Curved Tip** – Importantly, the anchor tip is shaped downwards, ensuring an instant set in the sea floor.
- **Max Holding Power Base** – The concaved base/fluke has the appearance of a spade or shovel, and has extreme holding power with a greater surface area than conventional style anchors. The result is a more secure, higher holding power anchor that will not release.
- **Side Wing Plates** – The Ultra Anchor does not release in a changing wind or tide. It performs a complete 180 degree rotation (while still buried) on its own length and holds firm. The side wing plates assist the anchor to perform this procedure and also act to stabilize the anchor as it penetrates the sea floor.
- **Flat Underside** – Once you begin to recover the anchor from the sea floor, it pivots itself on the flat section and begins to release (boat should be directly over anchor).
- **Non-Chain Foul Bar** – Often chain can foul around the shank of the anchor, resulting in the anchor not able to set. The clever design feature of the non chain-foul bar ensures chain simply cannot wrap around the shank and provides the ability to attach a trip line.
- **Reinforced Eye** – Even under the most extreme load the shank's reinforced eye will not bend, break or fail.
- **Anchor Weight Detail** – The anchor weight is stamped into the shank and identifies the anchor size in both kgs and lbs.
- **Serial Number** – Every Ultra Anchor is stamped with a unique serial number, ensuring your anchor is always identifiable.

Ultra Anchor Selection Chart

Maximum Boat Weight (Tonnes)

Product Code	Anchor Weight		Powerboat	Sailboat	Catamaran		Max Vessel Length
	kg	lbs			Sail	Power	
SSUA5-11	5	11	1.6 T	1.2 T	0.8 T	1 T	6 m
SSUA8-18	8	18	2.7 T	2.0 T	1.1 T	1.4 T	7 m
SSUA12-26	12	26	4.8 T	3.6 T	2.4 T	3 T	8 m
SSUA16-35	16	35	9.3 T	7 T	4.7 T	6 T	11 m
SSUA21-46	21	46	16 T	12 T	8 T	10 T	12 m
SSUA27-60	27	60	24 T	18 T	12 T	15 T	14 m
SSUA35-77	35	77	35 T	26 T	17 T	22 T	16 m
SSUA45-99	45	99	50 T	37 T	24 T	31 T	17 m
SSUA60-132	60	132	73 T	55 T	37 T	46 T	20 m
SSUA80-176	80	176	112 T	85 T	57 T	71 T	22 m
SSUA100-220	100	220	160 T	120 T	80 T	100 T	24 m

ULTRA Ultra Flip Swivel



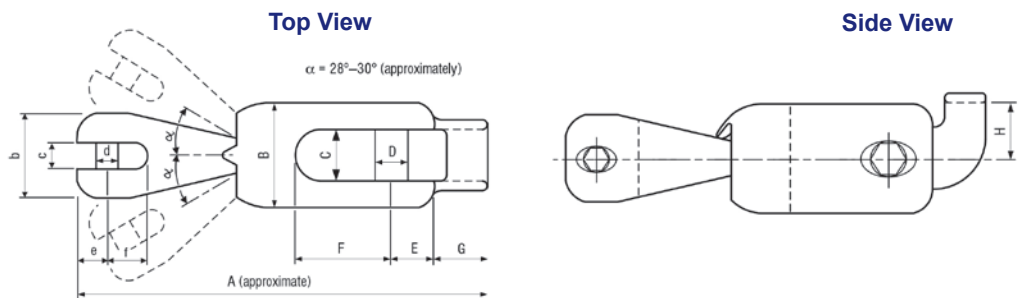
Overview

The Ultra Swivel is a uniquely fabricated anchor swivel, connecting the chain and anchor without the need of additional shackles. Fabricated from 316 stainless steel and hand polished for stunning presentation on the bow, the Ultra Swivel is uniquely strong, slimline and does not require any locking pins or safety wires.

The breaking strength of the swivel is typically higher than the chain connected and allows 30 degree rotation with complete 360 degree swivel. The Ultra Swivel is fabricated with a unique flipping nub; assisting to recover the anchor right-way up onto the bow roller. This flipping nub, combined with the Ultra Swivel's rotation and complete 360 degree swivel ability, ensures setting and recovering your anchor is an easier and safer task.

Hexagonal head locking bolts prevent the need for additional grub screws to secure the swivel pins. Every Ultra Swivel has the breaking strength listed on the rear of its one piece body.

Supplied with a standard three year warranty the Ultra Swivel incorporates unique design features and advantages, making it the world's most advanced anchor swivel.



TYPE #	CHAIN DIAMETER		WHOLE LENGTH APPROXIMATELY A	chain part dimensions b-c-d-e-f	ANCHOR PART DIMENSIONS B-C-D-E-F	FLIPPING BRIDGE DIMENSIONS G-H	BREAKING LOAD (*)		MAXIMUM ANCHOR WEIGHT
	mm	inch					kN	lbf	
ufs 6-12	6	1/4"	121	25×7,6×7×9×11	35×16×11×13×31	14×17	38,4	8640	12
	6	1/4"							
ufs 8-21	8	5/16"	147,5	30×9,4×9×11×14,5	40×19×13×16×36,5	18,5×20	56,7	12740	21
	8	5/16"							
ufs 10-35	10	3/8"	168	35×11,6×11×13×17	45×21×14,5×18×40	21×22,5	90,7	20400	35
	10	3/8"							
ufs 13-60	12	1/2"	211,5	45×15,2×14,5×16,5×23	55×26×18×23×51,5	26,5×30	160,9	36200	60
	13	1/2"							
ufs 16-100	12	1/2"	250	53×18,2×18×20×27	65×30,6×22×27×59	33×36	236,5	53200	100
	13	5/8"							
	14	5/8"							
	16	5/8"							
ufs 20-160	16	3/4"	309	65×23×22×26×34	→×38×26×32×72	40×40,5	321,5	72300	160
	20	3/4"							
	20	3/4"							
ufs 26-250	18	3/4"	364	→×30×26×33×43	→×48×32×40×77	48×56	474,8	106700	250
	20	1"							
	23	1"							
	26	1"							

(*) - Tested by RINA (except UFS 34-360).

- Safe Working Load = 0.5 x Breaking Load

- One size bigger UFS can also be used with the same chain. Therefore one size bigger swivel should be selected for chain such as Grade 70 (G7)

- UFS selection should be based on the "Max. Anchor Weight". If the "Max. Anchor Weight" is not enough, one size bigger UFS should be selected.

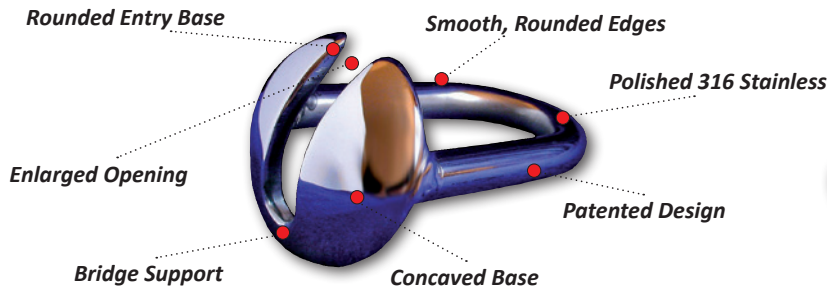
- Custom swivel without the flipping nub could also be made for symmetrical stockless anchors.

Note: Ultra Flip Swivel not recommended/compatible for use with sliding shank anchors (eg. sliding slot, rock slot, shackle slot...)



ULTRA

Ultra Chain Grab



Overview

Using a snubber is always recommended when deploying an all-chain rode. Snubbers act as shock absorbers between rode and vessel, while at the same time transferring surge loading caused by wind and waves from the windlass to a deck cleat. No windlass is built to bear the load of a deployed anchor, particularly the bone-jarring snatches of an all-chain rode fetching up short.

Made from 316 stainless steel, the chain grab ensures an even load is dispersed over the chain link attached and does not weaken or stretch the link. Likewise, the snubber rope absorbs the shock, relieving stress on the anchor rode and windlass thus prolonging the life of your anchor winch.

Product Code	Description	Chain Size	
		mm	inch
UCG06	Ultra Chain Grab t/s 6mm chain	6	1/4
UCG08	Ultra Chain Grab t/s 8mm chain	8	5/16
UCG10	Ultra Chain Grab t/s 10mm chain	10	3/8
UCG13	Ultra Chain Grab t/s 13mm chain	13	1/2
UCG16	Ultra Chain Grab t/s 16mm chain	16	5/8
UCG20	Ultra Chain Grab t/s 20mm chain	20	3/4

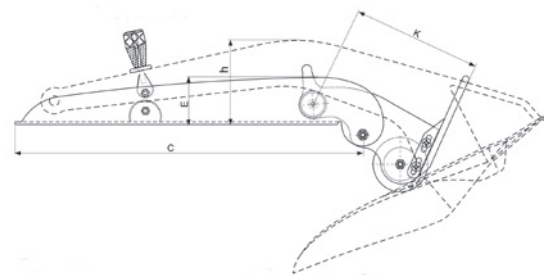
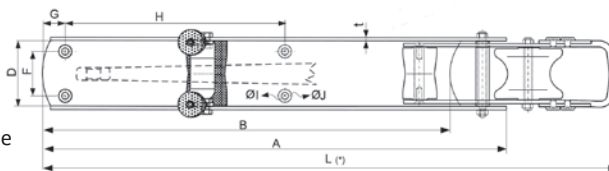
Unique Features

- **316 Stainless** – Designed to withstand any environment, the Ultra Chain Grab is fully fabricated (not cast) from 316 stainless steel and hand polished for immaculate presentation.
- **Concaved Base** – The concaved base design ensures the load is spread evenly across the chain link, avoiding potential stretching or weakening of individual chain links.
- **Bridge Support** – Provides strength to the concaved base of the chain grab ensuring it will not fail and prevents the chain link dropping off.
- **Rounded Edges** – Rounded edges and smooth corners ensure the chain grab will not catch or hook as it lowers over the bow roller and is easy on the hands.
- **Enlarged Opening** – Enables the chain grab to be easily attached to a taut anchor rode avoiding a potentially dangerous situation if conditions are unfavourable.
- **Rounded Entry** – As above, assists the chain entry into the opening ensuring the link does not catch on the entry corners.
- **Patented Design** – Uniquely designed and manufactured, the chain grab is a patented design and is the most advanced chain grab available in today's market.
- **Warranty** – Ultra Chain Grab is supplied with a standard three year warranty.

Ultra Articulated Bow Roller

Unique Features

- 316 Stainless Steel
- Drilled or Undrilled
- To suit anchors up to 250Kgs
- Further Specifications Available

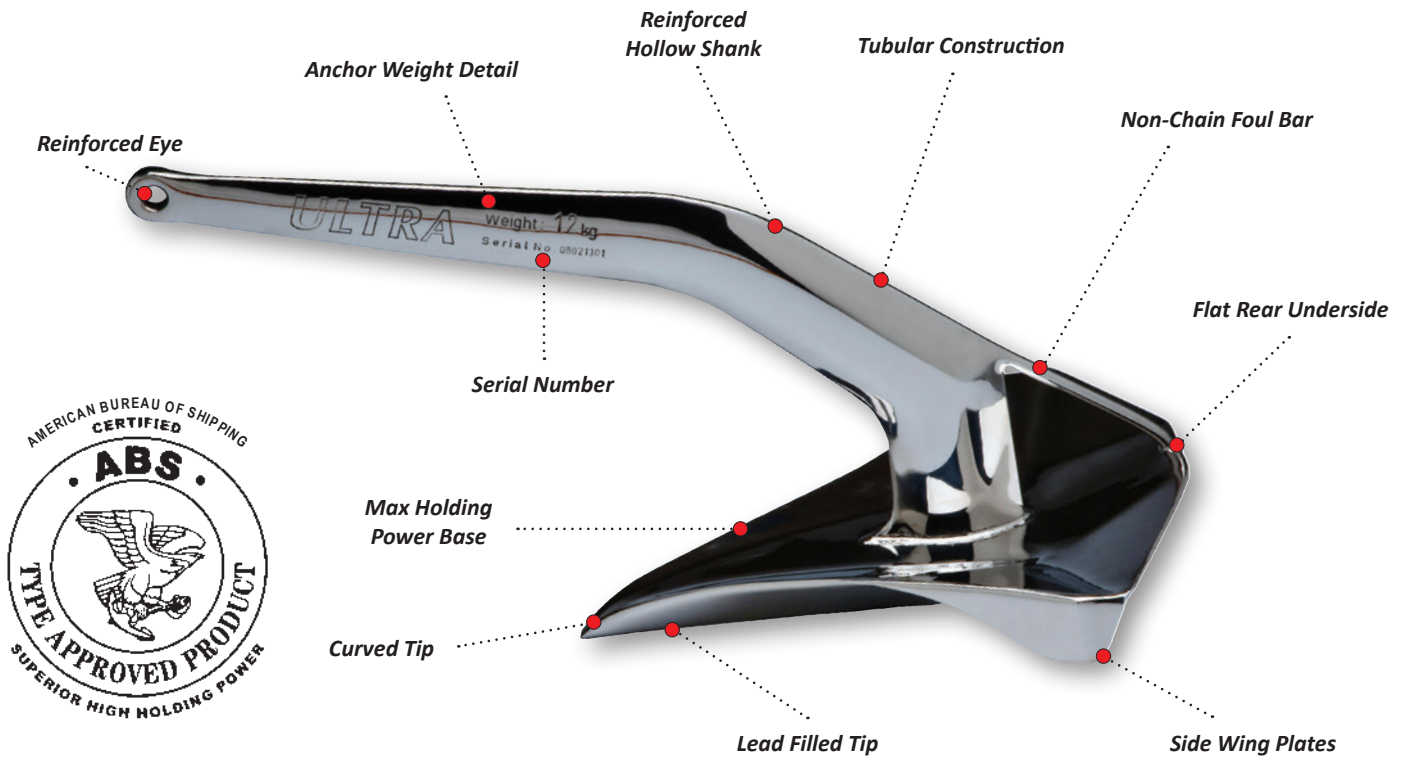


Anchor kg	5	8	12	16	21	27	35	45	60	80	100	130	160	200
A	396	464	531	584	639	696	759	825	908	994	1079	1175	1259	1356
B	342	400	458	504	551	600	654	711	783	862	929	1013	1086	1170
C	374	438	501	551	604	657	716	778	857	943	1016	1109	1188	1280
D	55	64	74	81	89	96	105	114	126	139	149	163	175	188
E	50	59	67	74	81	88	96	105	115	127	137	149	160	172
K	141	165	188	207	227	247	269	293	322	355	383	417	447	482
L(*)	536	573	656	721	790	859	937	1018	1121	1234	1329	1450	1555	1675
t	3	4	4	4	5	5	6	6	6	8	8	8	10	10

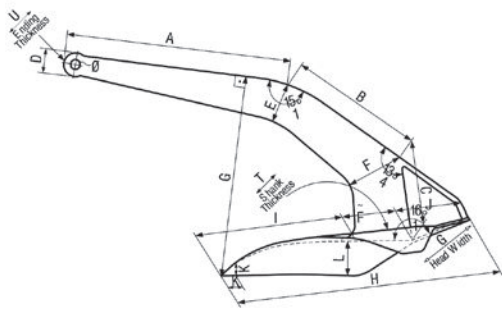
Note: Dimensions (mm) and details might be changed without notice.

ULTRA

ANCHORS



Ultra Anchor Overall Dimensions



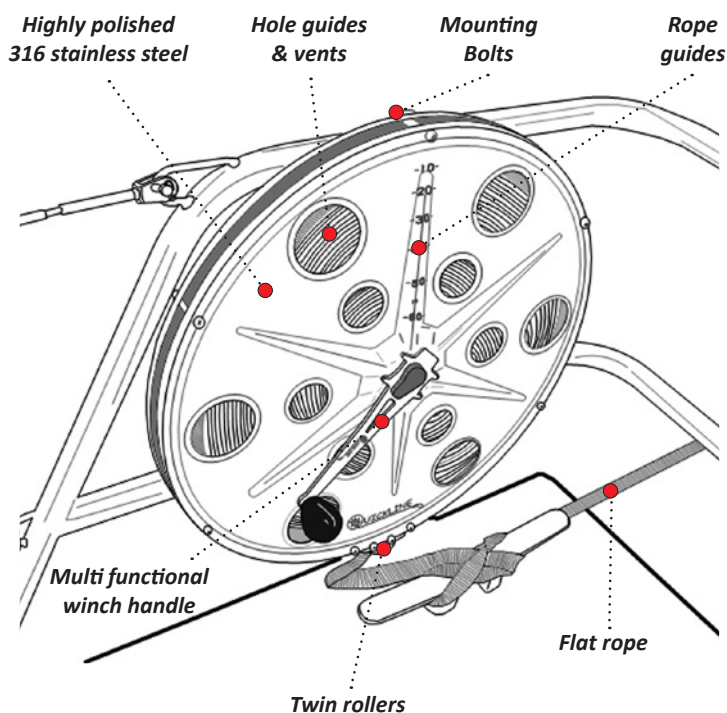
ANCHOR DIMENSION	5	8	12	16	21	27	35	45	60	80	100	130	160	200
A	293	343	392	432	473	514	561	610	671	739	796	868	931	1003
B	165	193	221	243	266	290	316	344	378	416	449	490	525	565
C	109	128	146	161	176	192	210	227	250	276	297	324	347	374
D	30	32	37	40	44	48	52	57	62	69	74	82	90	100
Ø	13	14	15	16	17	18	20	22	24	26	28	30	33	35
E	52	61	70	77	84	91	100	108	119	131	141	154	166	178
F	71	83	95	105	115	125	137	149	164	180	194	212	227	244
G	255	298	341	375	411	447	488	530	584	642	692	755	809	872
H	330	386	442	442	533	579	632	687	756	832	896	978	1048	1129
I	180	211	242	266	291	317	346	376	414	455	491	535	574	618
J	79	92	106	117	128	139	152	165	181	200	215	235	252	271
K	13	15	18	20	21	23	26	28	31	34	36	40	43	46
L	45	53	60	67	73	79	87	94	104	114	123	134	144	155
N	545	638	730	804	880	957	1044	1135	1249	1375	1481	1616	1732	1866
O	385	451	516	568	622	676	738	802	883	972	1047	1142	1224	1319
P	426	498	571	628	688	748	816	887	976	1074	1157	1263	1354	1458
Q	325	380	436	479	525	571	623	677	745	820	884	964	1034	113
R	201	235	269	296	324	353	385	418	460	507	546	596	639	688
S	161	188	238	238	260	283	309	336	369	407	438	478	512	552
T	26	31	35	39	43	46	51	55	61	67	73	79	85	92

Note: Dimensions (mm) are approximate.

ULTRA *Ultraline Flat Rope Reel*

Unique Features

- **Hole Guides** – Provides guide for length of line deployed and assists the flat rope to dry quickly.
- **Housing & Mounting Bolts** – Housing bolts are also incorporated into the mounting system for rail and deck mounted installations.
- **Rope Guide** – Provides an indication of the length of rope deployed.
- **Flat Rope** – Made of durable polyester, the flat rope is UV resistant and has high breaking strength. The flat rope is easy to deploy, secures well to a cleat and is compact for storage.
- **Twin Rollers** – Ensures correct entrance of flat rope into housing and dispenses excess water from rope as it passes through.
- **Winch Handle** – The multifunctional winch handle is slimline, strong and does not restrict deck space. It can be used as a tool on various deck hardware and contains a standard shaft profile.
- **Material** – Made from 316 stainless steel the reel housing is suitable for any environment.
- **Standard Winch Profile** – The Ultraline Flat Rope Reel is manufactured with a standard winch handle profile so any winch handle can be used.
- **Warranty** – A standard three year warranty is supplied.



Overview

The Ultraline Flat Rope & Reel is designed and manufactured in Europe as a solution for stern anchor lines, towlines or mooring lines and allows for storing a significant length of line in a compact space. The reel housing is constructed from highly polished 316 stainless steel and is available in various UV resistant line lengths ranging from 130 - 265 feet (40m -80m).

Line deployment and retrieval is easy. Simply let the line pay out as needed and wind up when done. Not to be used as a load bearing device, the flat rope must be cleated off when anchored or towing. The line is self storing and non-fouling and the flat rope means no more uninvited sea creatures on board. The rope comes with a pre-fabricated, stitched eye at one end while the other is fastened to the spool. Also included is a multi functional winch handle and comprehensive mounting kit.

TYPE #	Width		Line Width		Thickness		Reel Diameter		Breaking Force		Weight		
	mm	inch	m	feet	mm	inch	cm	inch	kg	lbs	kg	lbs	
(POLYESTER)													
ULP3040	30	1.18"	40	132'	2	0.09"	39	15"	2000	6850	5.5	12.0	
ULP3060	30	1.18"	60	198'	2	0.09"	47	18"	2000	6850	8.3	18.0	
ULP3080	30	1.18"	80	263'	2	0.09"	54	21"	2000	6850	10.5	23.0	

TYPE #	Width		Line Width		Thickness		Reel Diameter		Breaking Force		Weight	
	mm	inch	m	feet	mm	inch	cm	inch	kg	lbs	kg	lbs
(DYNEEMA)												
ULD2240	22	0.86"	40	132'	2	0.098"	39	15"	3200	7055	4.5	9.8
ULD2260	22	0.86"	60	198'	2	0.098"	47	18"	3200	7055	7.3	15.8
ULD2280	22	0.86"	80	263'	2	0.098"	54	21"	3200	7055	9.5	20.8

ULTRA MARINE PRODUCTS Pty Ltd

PO Box 1055, Oxenford, Queensland Australia 4210

The Boatworks Complex

Sheds 7-8, Building.G, 200 Beattie Road, Coomera, Queensland Australia 4209

Ph: (+61) 7 5644 1250 | Fax: (+61) 7 5519 3529

www.ultramarineproducts.com.au | info@ultraanchors.com