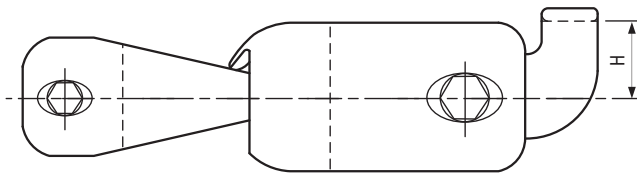
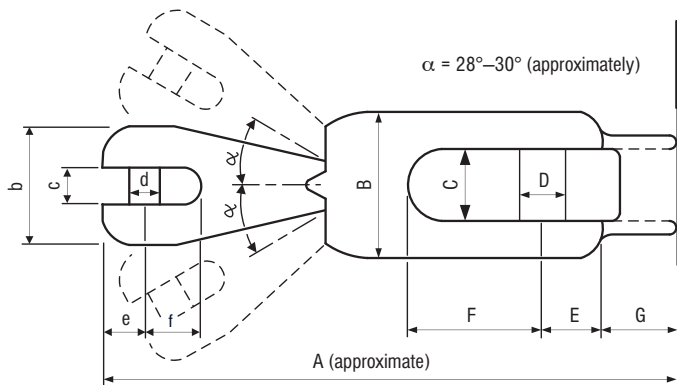


Flip Swivel

side view



top view



| TYPE # | CHAIN DIAMETER | | WHOLE LENGTH APPROXIMATELY | chain part dimensions | ANCHOR PART DIMENSIONS | FLIPPING BRIDGE DIMENSIONS | BREAKING LOAD (*) | | MAXIMUM ANCHOR WEIGHT |
|------------|----------------|---------|----------------------------|-----------------------|------------------------|----------------------------|-------------------|---------|-----------------------|
| | mm | inch | mm | b×c×d×e×f | B×C×D×E×F | G×H | kN | lbf | kg |
| ufs 6–12 | 6 | 1/4" | 121 | 25×7,6×7×9×11 | 35×16×11×13×31 | 14×17 | 38,4 | 8640 | 12 |
| | 6 | 1/4" | | | | | | | |
| ufs 8–21 | 8 | 5/16" | 147,5 | 30×9,4×9×11×14,5 | 40×19×13×16×36,5 | 18,5×20 | 56,7 | 12740 | 21 |
| | 8 | 5/16" | | | | | | | |
| ufs 10–35 | 10 | 3/8" | 168 | 35×11,6×11×13×17 | 45×21×14,5×18×40 | 21×22,5 | 90,7 | 20400 | 35 |
| | 10 | 3/8" | | | | | | | |
| ufs 13–60 | 12 | | 211,5 | 45×15,2×14,5×16,5×23 | 55×26×18×23×51,5 | 26,5×30 | 160,9 | 36200 | 60 |
| | 13 | 1/2" | | | | | | | |
| | 12 | 1/2" | | | | | | | |
| ufs 16–100 | 13 | | 250 | 53×18,2×18×20×27 | 65×30,6×22×27×59 | 33×36 | 236,5 | 53200 | 100 |
| | 14 | | | | | | | | |
| | 16 | 5/8" | | | | | | | |
| | 14 | 5/8" | | | | | | | |
| ufs 20–160 | 16 | | 309 | 65×23×22×26×34 | ~×38×26×32×72 | 40×40,5 | 321,5 | 72300 | 160 |
| | 18 | | | | | | | | |
| | 20 | 3/4" | | | | | | | |
| | 18 | 3/4" | | | | | | | |
| ufs 26–250 | 20 | | 364 | ~×30×26×33×43 | ~×48×32×40×77 | 48×56 | 474,8 | 106700 | 250 |
| | 23 | | | | | | | | |
| | 26 | 1" | | | | | | | |
| | 22 | 7/8" | | | | | | | |
| ufs 34–360 | 26 | | – | – | – | – | ~800 | ~180000 | 360 |
| | 30 | | | | | | | | |
| | 34 | 1 5/16" | | | | | | | |

- (*) – Tested by RINA (except UFS 34–360).
 – Safe Working Load = 0,5 × Breaking Load.
 – One size bigger UFS can also be used with the same chain. Therefore one size bigger swivel should be selected for chains such as Grade 70 (G7).
 – UFS selection should be based on the “Max. Anchor Weight”. If the “Max. Anchor Weight” is not enough, one size bigger UFS should be selected.
 – Custom ones without the flipping bridge and flipping nub could also be made for symmetrical stockless anchors.